

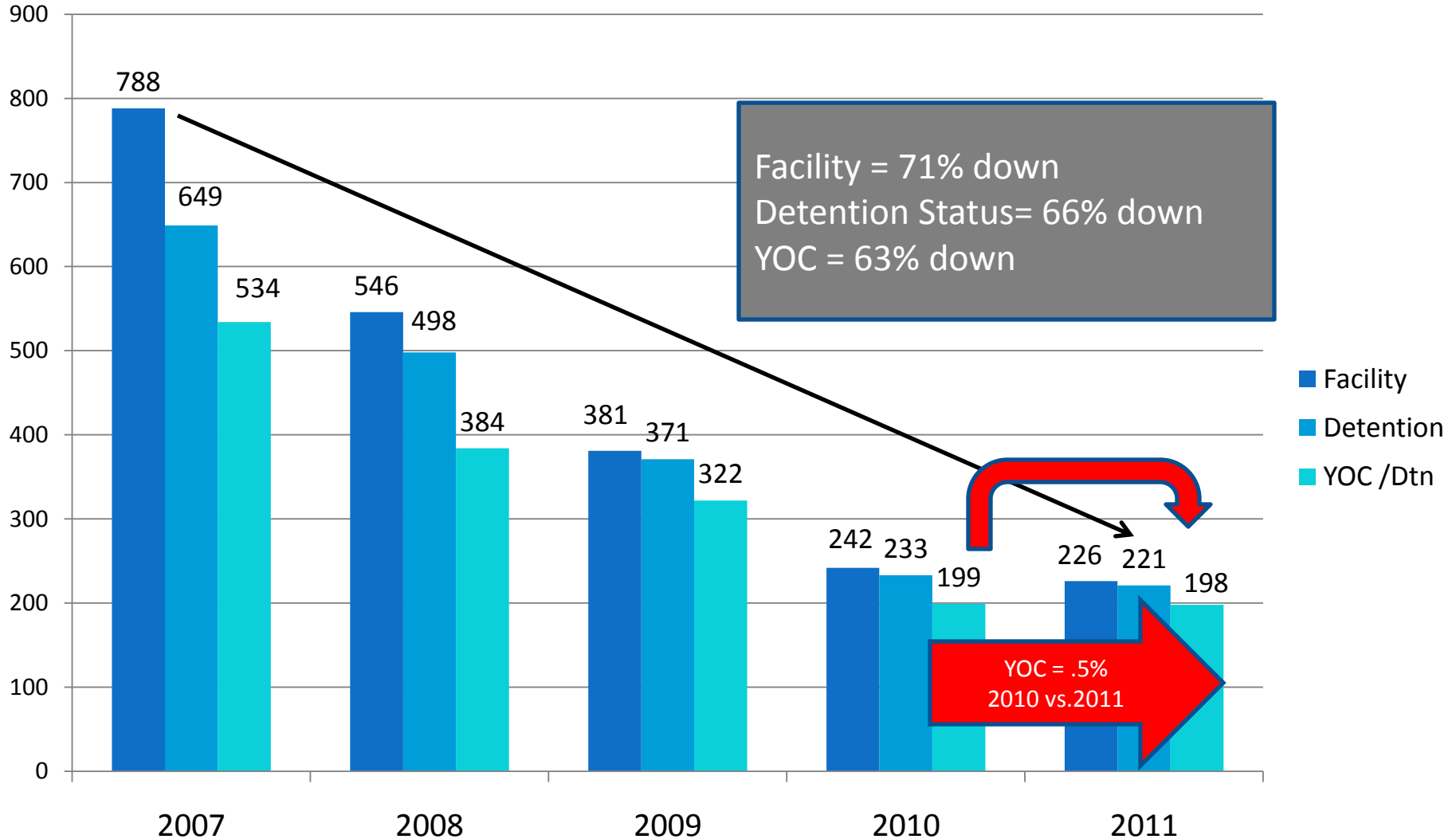
Data Results



Ramsey County Stakeholders

JDC Total Admissions for 1st Quarter

(Jan 1 – Mar 31)



JDAI IMPACT

System Outcomes

Ramsey County (1st Quarter Comparisons)

Average Daily Population in
Detention
All Youth
(2007 – 2011)



58%

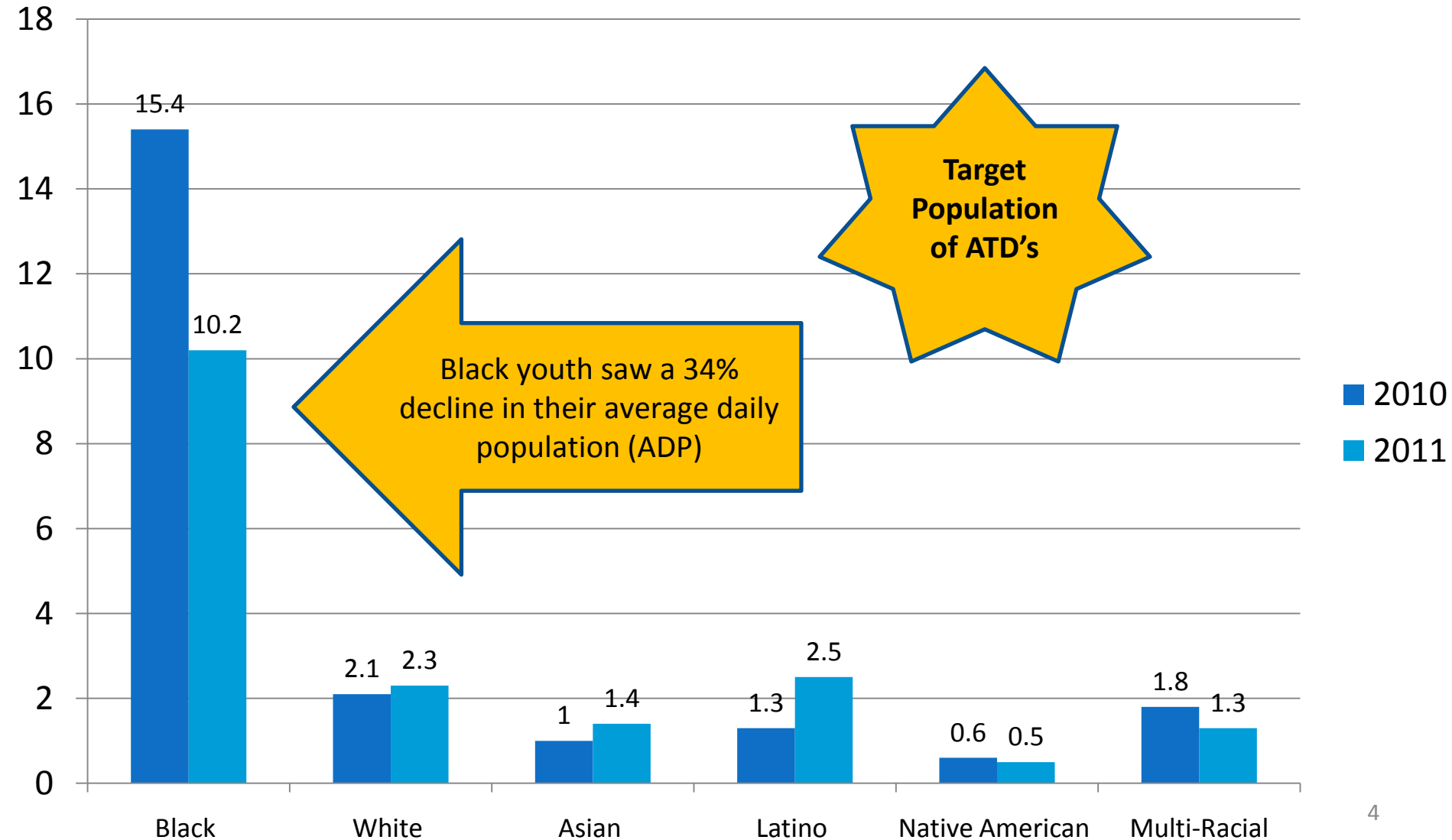
Average Daily Population in
Detention
Youth of Color
(2007 – 2011)



57%

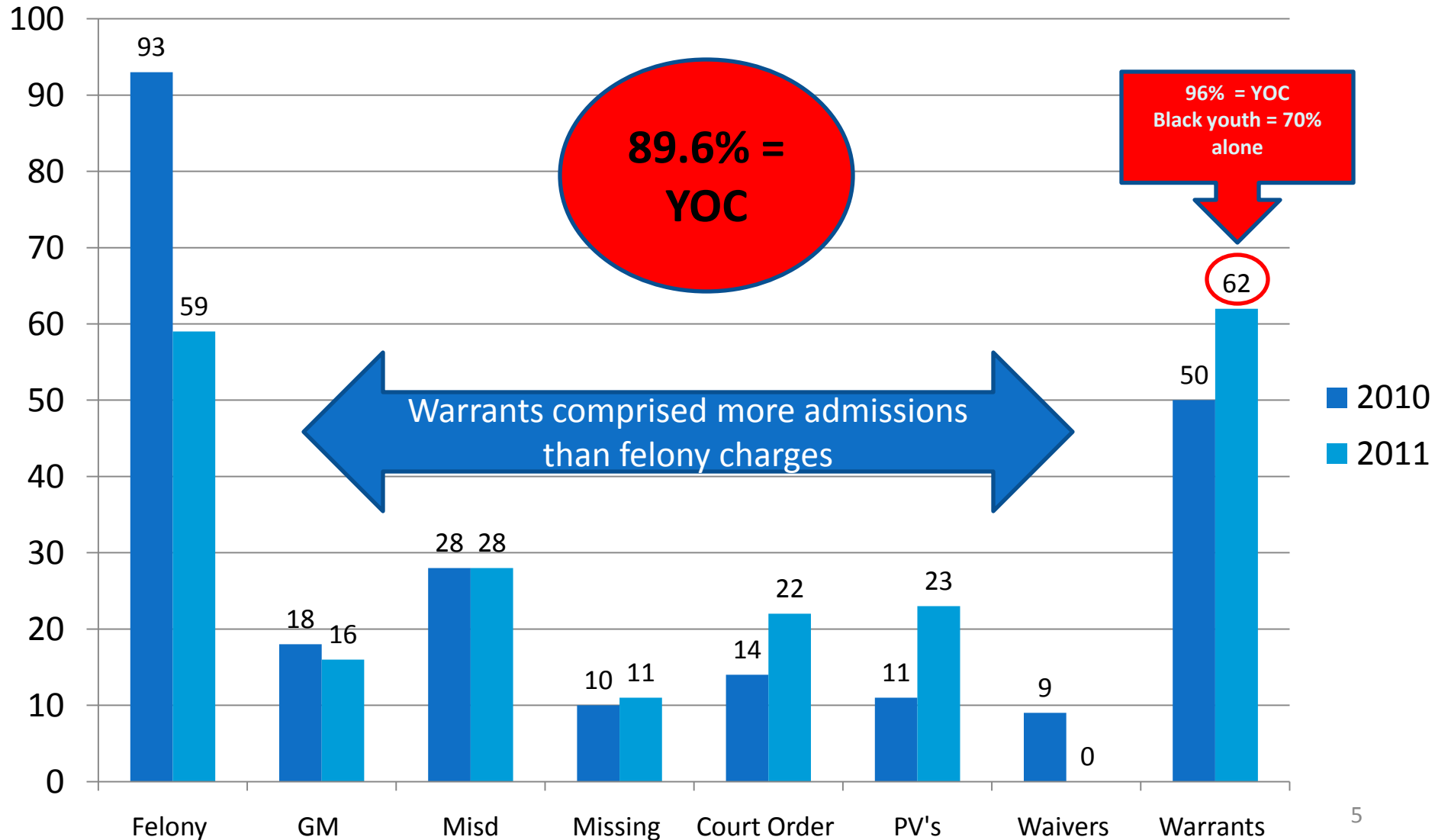
Total ADP in JDC by Race

(January 1 – March 31)



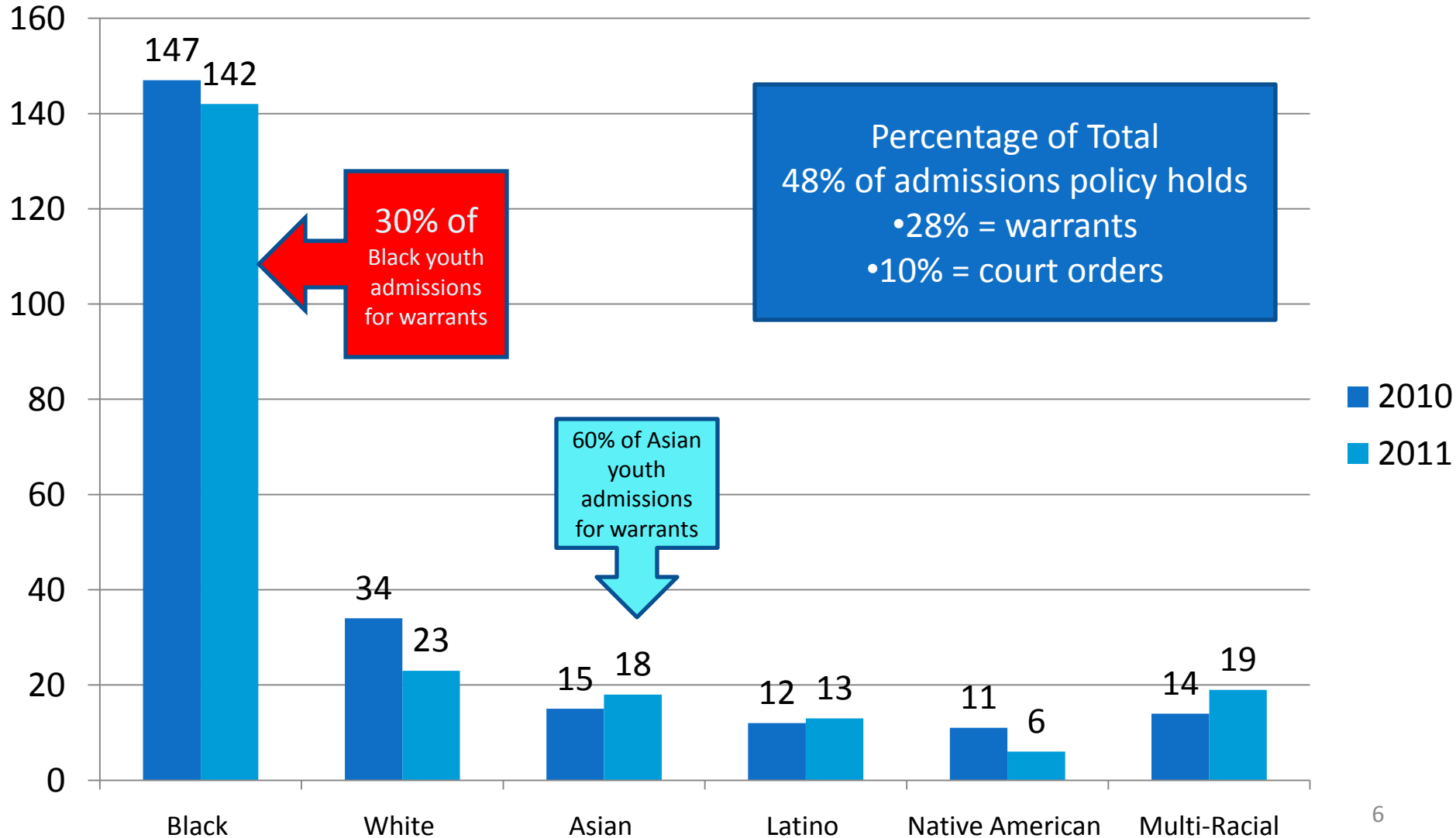
Reasons for Detention in JDC

(January 1 – March 31)



Total Admissions to JDC by Race

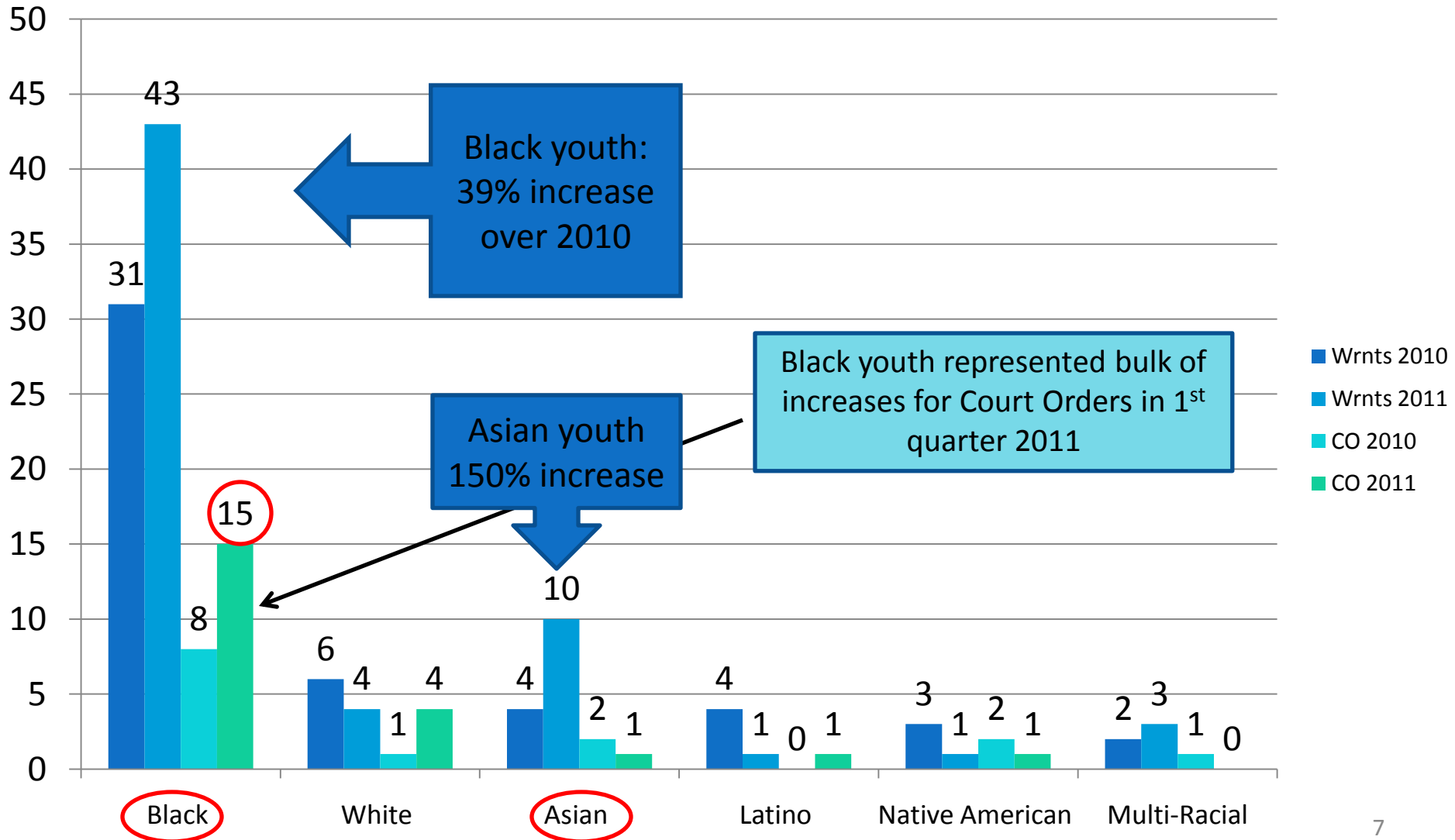
(January 1 – March 31)



Warrants & Court Orders

resulting in detention

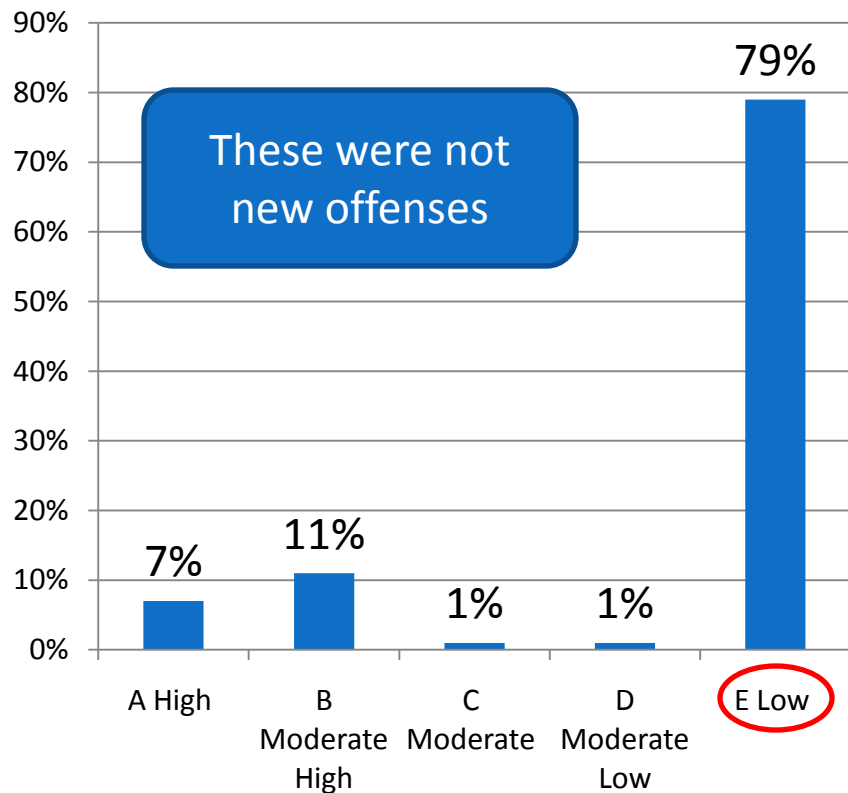
(January 1 – March 31)



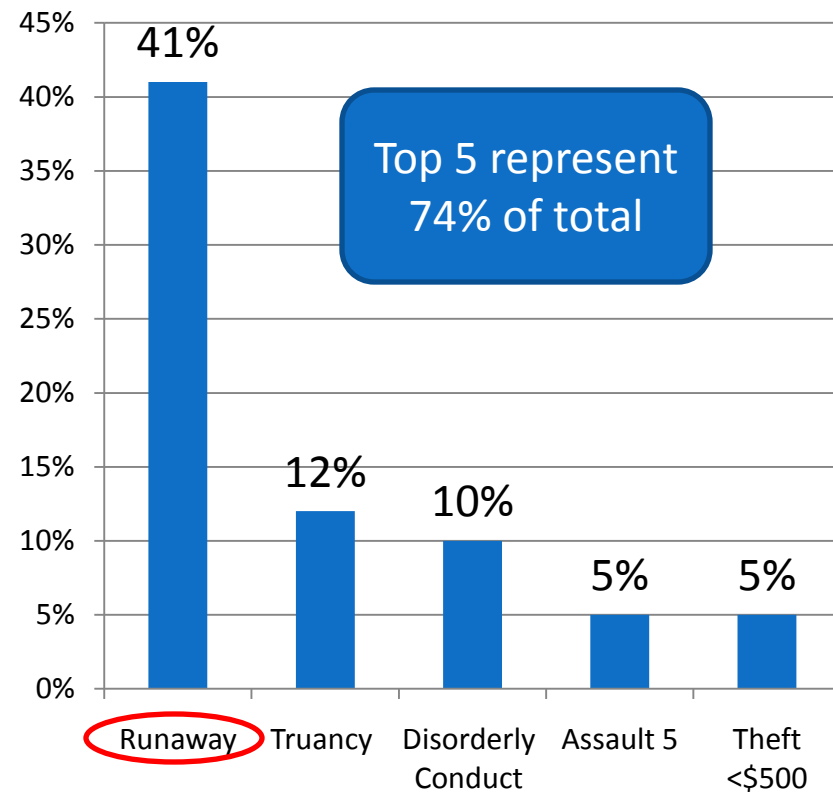
Offenses attached to Warrants for detained youth

1st Quarter 2011 (Jan 1- Mar 31)

Offense Levels



Top 5 Offenses – Warrants



Warrant Instructions & RAI Scores

for youth detained

1st Quarter 2011 (Jan 1- Mar 31)

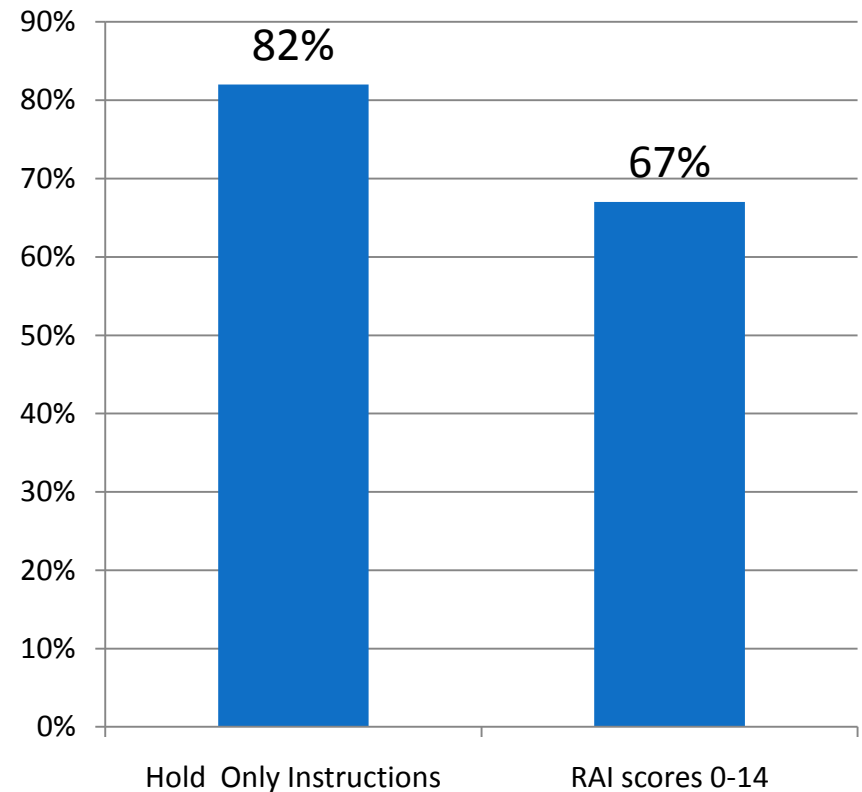
New Warrant Policy allows for the following instructions:

- Hold Only
- Hold or Release pursuant to RAI Score
- Release

Most youth w/ warrants detained:

- January 2011 = 67%
- February 2011 = 89%
- March 2011 = 75%

Warrant Instructions and RAI Scores



2nd Quarter Priorities

- Analyze warrant admissions and policies
- Analyze court order admissions and policies
- Launch new round of Community Based ATD's
- Continue Decision Point Analysis with partners
- Evaluate Committee Structure (e.g. Steering/DMC)